

MANUAL READER

Manual Reader brings a new level of appliance to the identification technology/system. It contains both an RFID reader and a 1D/2D barcode scanner.



Diode indicating
operating mode
and scan status



Wireless induction
charging

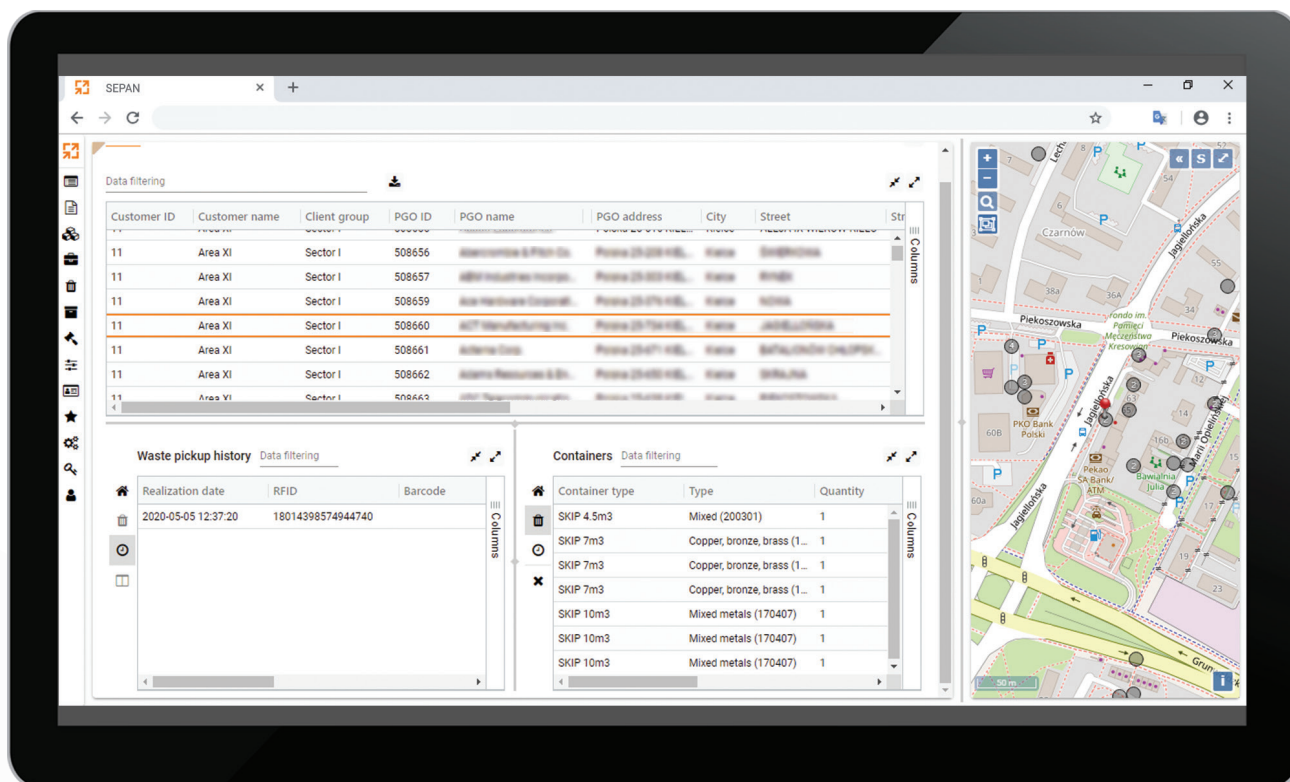


Ergonomic durable
housing resistant to
mechanical damage
(nylon housing)



Wide range of applications:

- ▶ RFID tag reader – operating with frequencies of 125 kHz and/or 134,2 kHz
- ▶ Barcode reader
- ▶ 2D code reader (for ex. QR code)



TECHNICAL DETAILS

Docking station:

- Supply voltage: 10 - 30V
- Communication interface: RS485 or Bluetooth
- Communication protocol: ETP (connection to SMOK GPS controller), EL-protocol
- Wireless charging in accordance with Qi
- Radio communication range 2,4GHz 100 m (in opened space)
- Dimensions: ø 105 x 65 [mm]

Wireless reader:

- Battery internal capacity: 2.5Ah
- Types of readable transponders: FDX-A, FDX-B, HDX
- Frequencies: 125kHz, 134.2kHz
- Data buffer: 1000 transponder numbers (automatic read-out while in range)
- Wireless connection module frequency: 2,4GHz
- Optical indication of reader mode: RGB LEDs
- Acoustic indicator
- Temperature range: -20 ÷ +60°C
- Protection class level: IP67
- Dimensions: ø 65 x 170 [mm]

The first item is a docking station, which is connected directly to the GPS controller in the vehicle. It is equipped with wireless charger, interface of wired communication with the recorder and wireless communication with the reader, housing with the socket for charging the reader.

Second module is the reader itself, portable, wireless reader which contains of:

- Rechargeable battery,
- Wireless integrated charger with thermal shutdown and overcurrent protection,
- Temperature monitoring and fault detector,
- Microcontroller,
- Accelerometer,
- Wireless communication module 2,4GHz,
- FDX reader module,
- HDX reader module,
- 1D and 2D barcode reader module,
- Optical indication module,
- Acoustic indicator,
- Hermetic housing.